



Timber Frame Homes Inc.

Maggie Valley

**Main Level 1831
Upper Level 151
Lower Level 1416**

Total 3398

**Covered Porches 654
Screened Porch 264
Open Decks 593
Garage 768
Bonus Room 707**

**Number of Stories 1.5
Foundation Daylight Basement**

**Construction Type Timber Frame
Enclosure Structural Insulated Panels (SIPs)**

Style Craftsman, Mountain, Cottage, Bungalow

**Bedrooms 3
Baths 4**

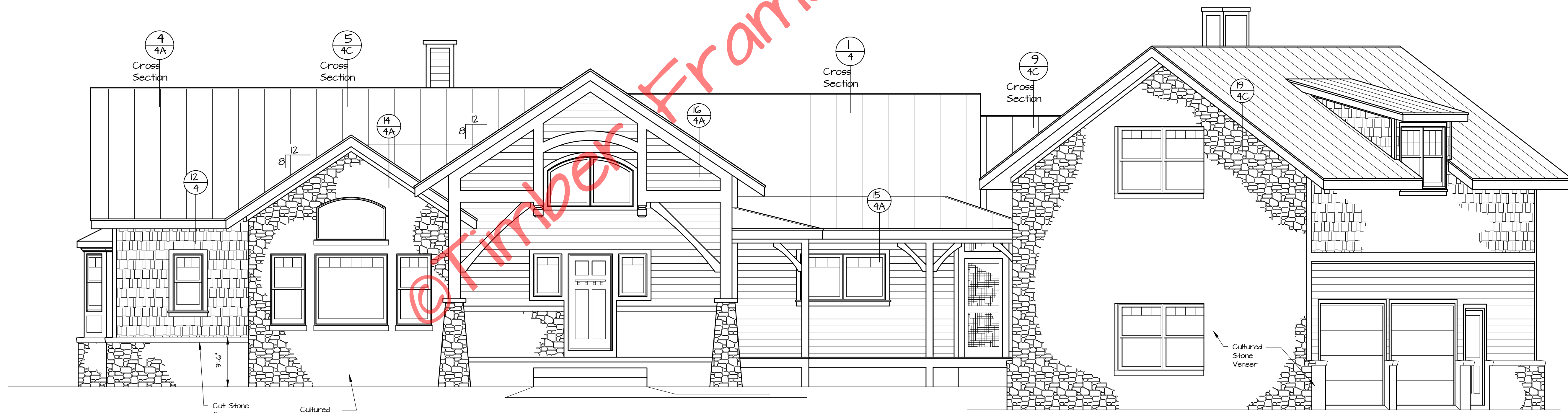
House Dimensions

**Width 101'11"
Depth 46'10"
Maximum Ridge Height 25'11"**



Rear Elevation

1/4" = 1'-0"



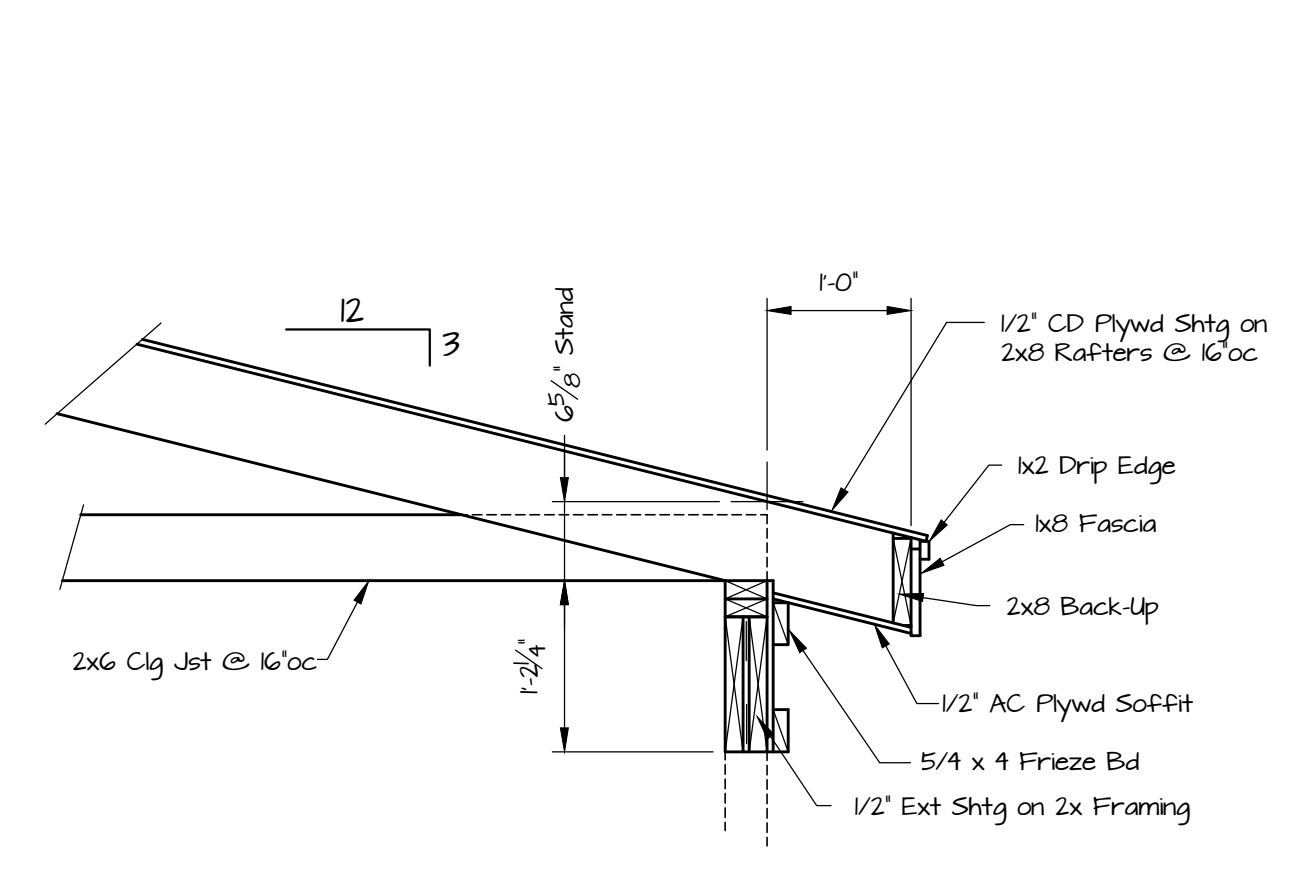
Front Elevation

1/4" = 1'-0"

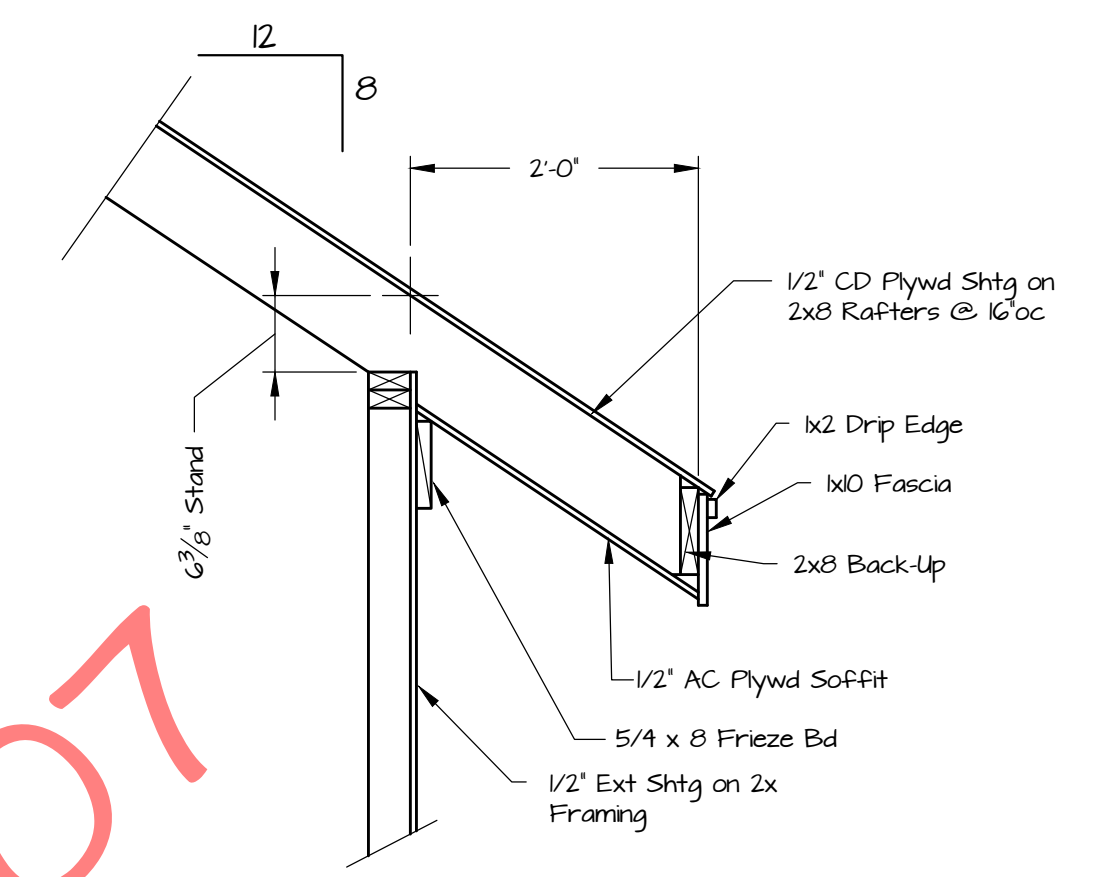


Copyright 2007 by Timber Frame Homes Inc.
All federal, state, and local codes, ordinance, regulations etc. shall be considered as part of specifications for this building and shall take precedence over anything shown, described or implied where same are in variance. All dimensions and conditions shall be verified on site by builder.

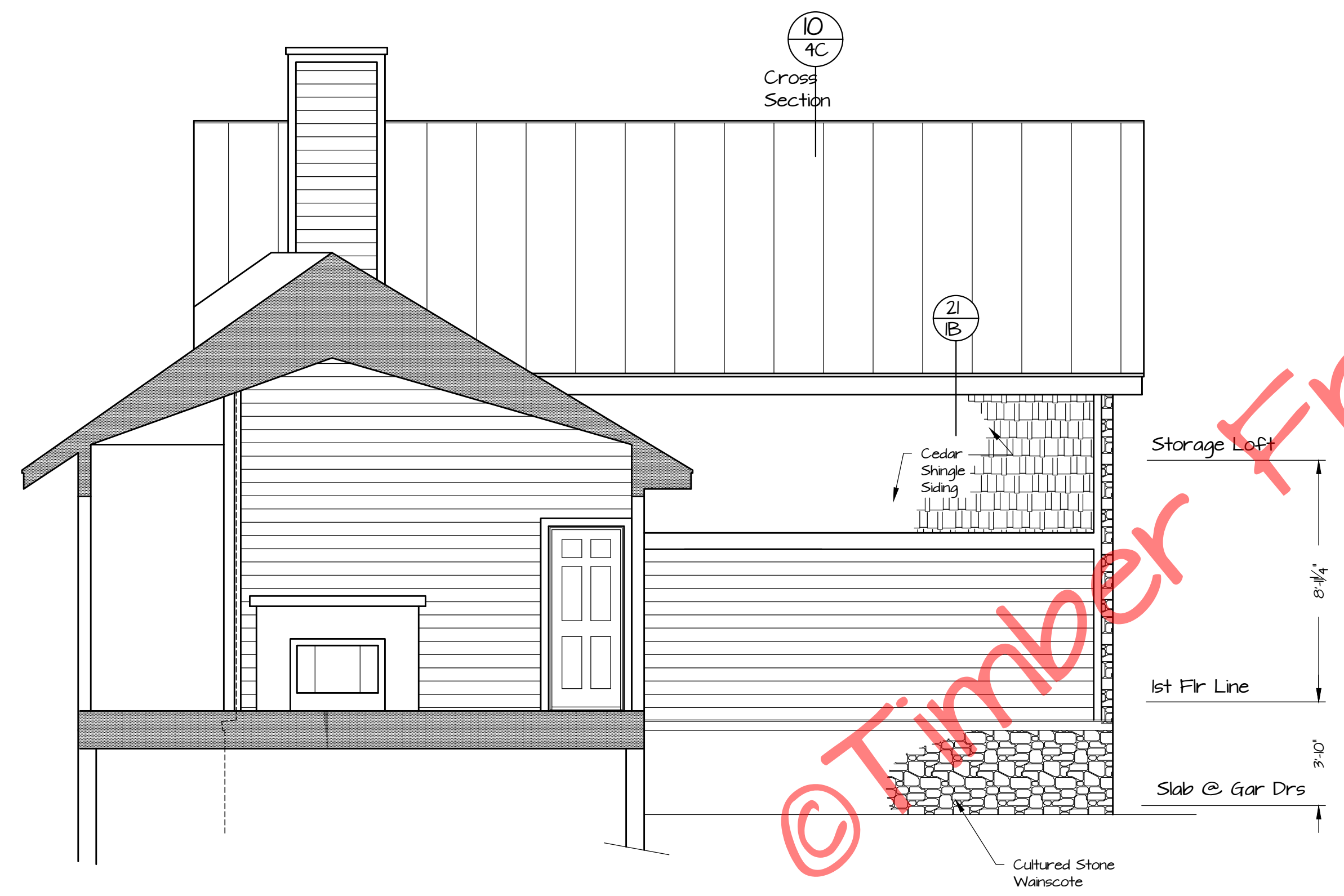
NO.	DATE	REVISIONS	REMARKS	BY
1	3-19-08	Final		MAW
2	4-1-08		Change Front Entry Door & Windows	MAW



20 Eave Detail
IB 3/4" = 1'-0"



21 Eave Detail
IB 3/4" = 1'-0"



Garage Left Side Elevation
1/4" = 1'-0"



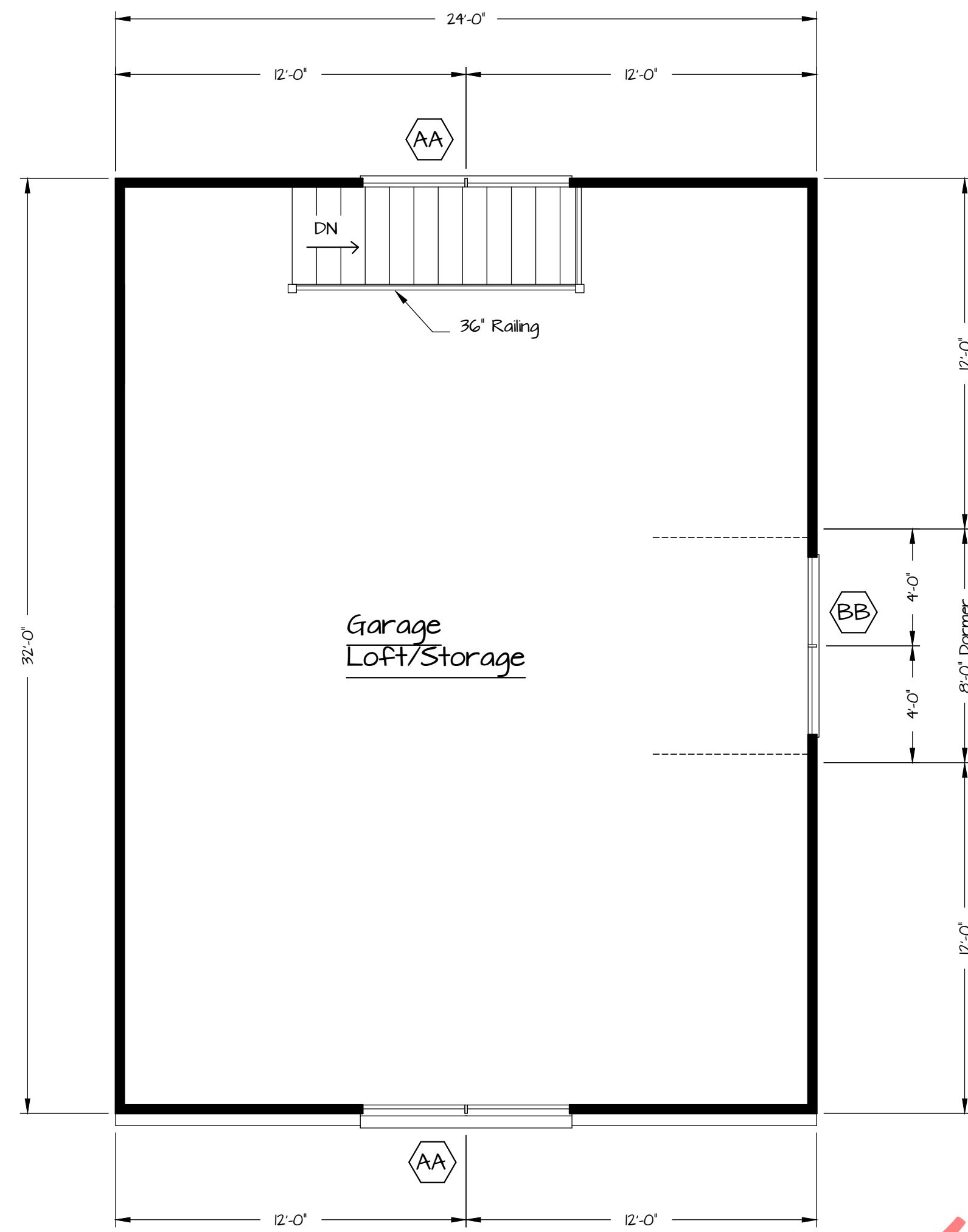
Garage Right Side Elevation
1/4" = 1'-0"

© Timber Frame Homes, Inc. 2007

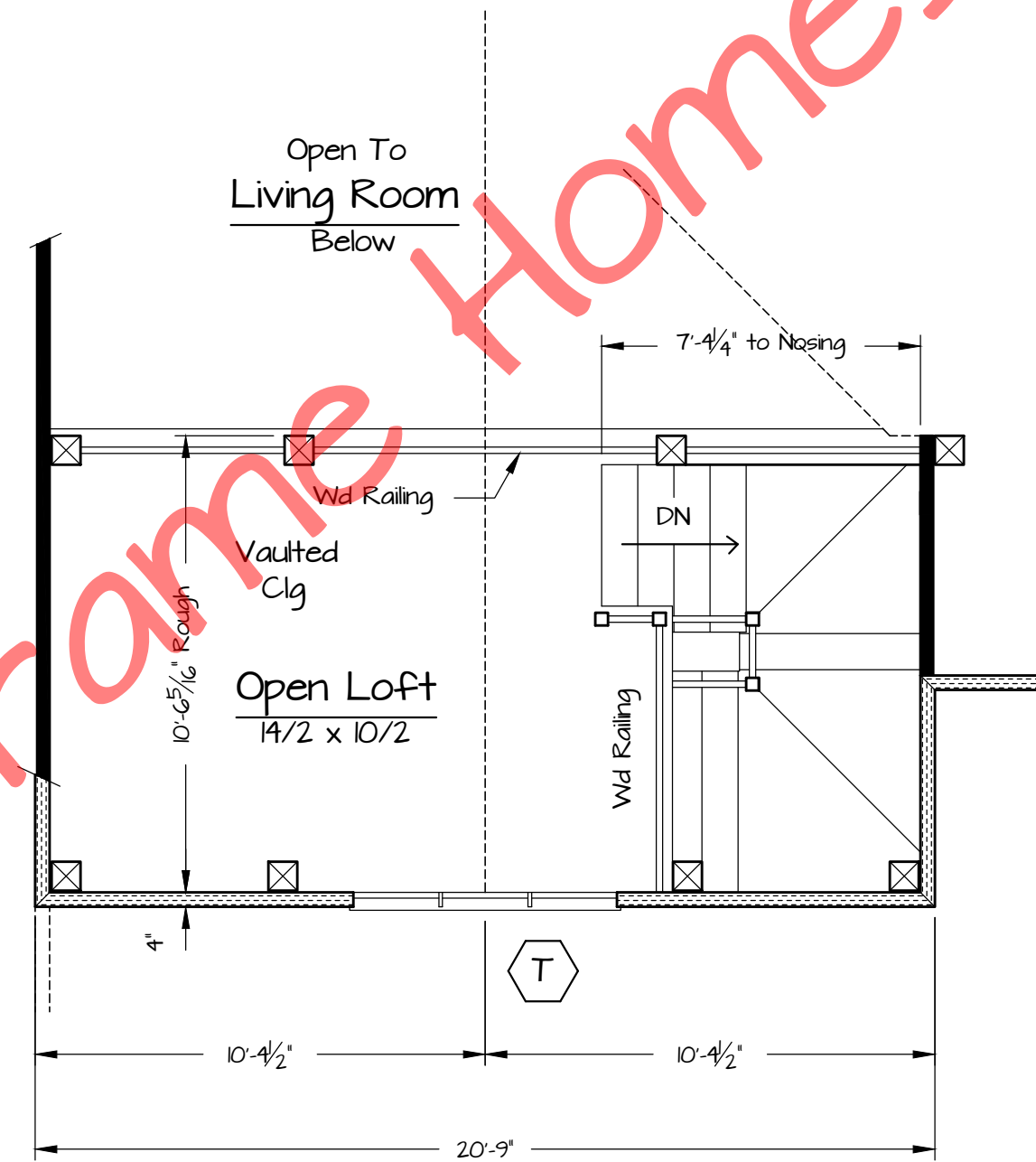


Copyright 2007 by Timber Frame Homes Inc.
All federal, state, and local codes, ordinance, regulations etc. shall be considered as part of specifications for this building and shall take precedence over anything shown, described or implied where same are of variance. All dimensions and conditions shall be verified on site by builder.

REVISIONS		BY
NO.	DATE	REMARKS
1	3-19-08	Final



Garage Storage
Loft
1/4" = 1'-0"



Second Floor Plan
1/8" = Living Area 1/4" = 1'-0"

Window Schedule			
Window #	Rough Opening	Qty	Location
A	ECD2548	26 1/8 x 48 3/4	1 MB
B	ECD2160	22 1/8 x 60 3/4	2 Office
C	ECD2960	30 1/8 x 60 3/4	2 Office
D	ECDP6160	62 1/8 x 60 3/4	1 Office
E	CAESC-60L30	See Below	1 Office
F	3/0 x 6/8 Ext Dr	38 1/2 x 82 3/4	1 Entry
G	ECA3624	36 3/4 x 24 3/4	1 WIC
H	ECC3636-2	72 3/4 x 36 3/4	1 Kit
J	SCHD-90610	108 3/4 x 83	1 Dn
K	ECC3672-3 w/ ECC3618-3	108 3/4 x 90 3/4	1 Dn
L	SCHD-29610 w/ SCHD-296-1	33 3/4 x 101 1/4	2 LR
M	ECC3654-2 w/ ECC3618-2	72 3/4 x 90 3/4	3 LR
N	Special	See Below	1 LR
P	Special	See Below	1 LR
Q	Special	See Below	1 LR
R	SCS3-6016-1 w/ SCS3-6011	72 3/4 x 101 1/4	1 MBR
S	ECC3660 w/ ECC3618	36 3/4 x 78 3/4	2 MBR
T	ECCS3630-2	See Below	1 Loft
U	ECD3156-3	94 7/8 x 56 3/4	1 BR2
V	ECC3072-2	60 3/4 x 72 3/4	2 FR
W	SCHD-6061F	72 3/4 x 83	1 FR
X	ECC3660	36 3/4 x 60 3/4	2 BR3
X2	ECC3660-2	72 3/4 x 60 3/4	1 BR3
Y	ECC1848	18 3/4 x 48 3/4	2 MB
Z	ECC3648	36 3/4 x 48 3/4	1 MB
AA	ECD4152-2	83 1/2 x 52 3/4	3 Gar
BB	ECD3148-2	63 1/2 x 48 3/4	1 Gar Dormer
CC	ECC2436	24 3/4 x 36 3/4	2 Entry

© Timber Frame Homes, Inc. 2007

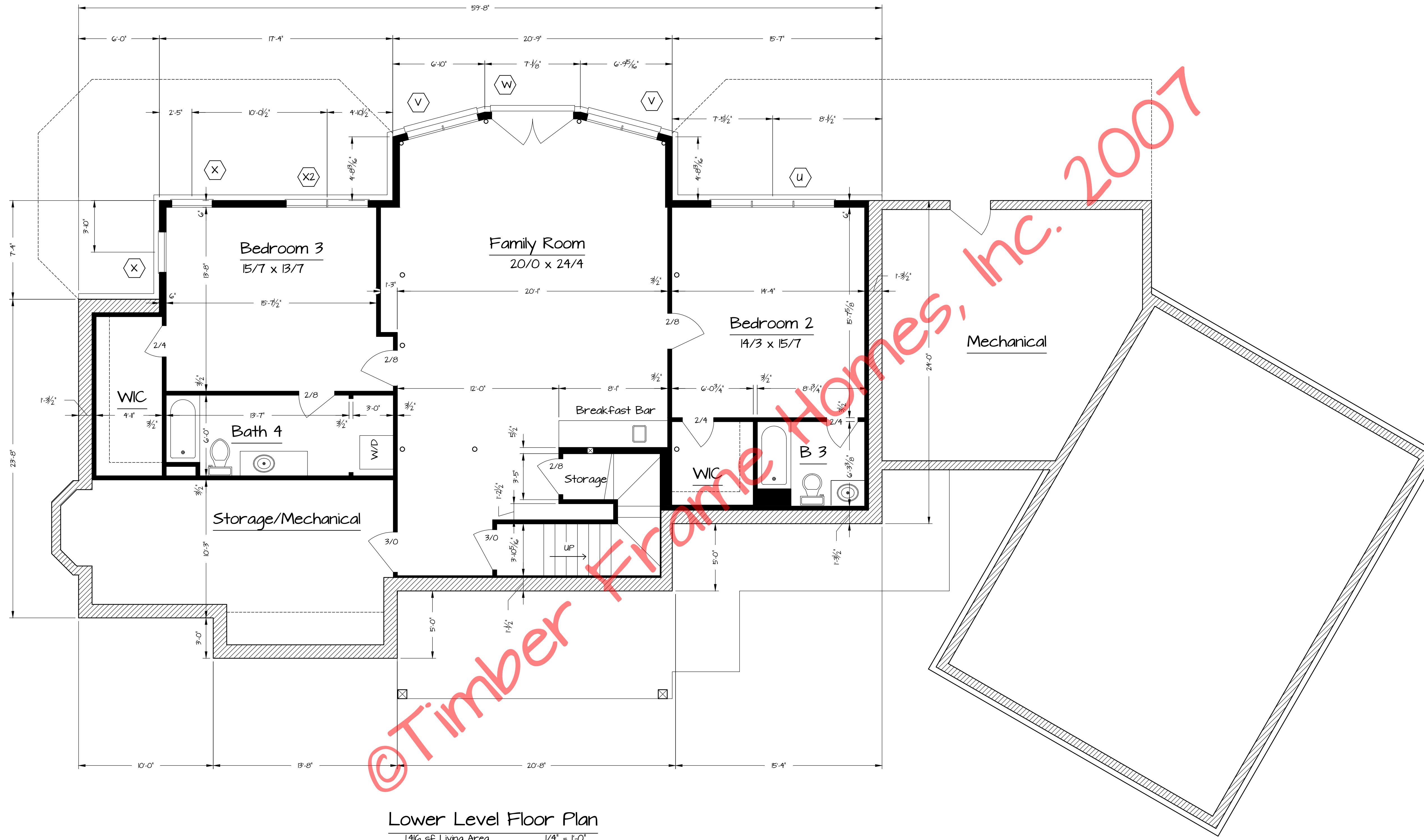
1. 'Jeld-Wen' WINDOW NOMENCLATURE
2. EXTERIOR WALLS ARE 4" STRUCTURAL INSULATED PANELS (R-24) by GOSHEN
3. ROOF CONSISTS OF 6 1/2" STRUCTURAL INSULATED PANELS (R-40) on 1X8 T&G DECKING by GOSHEN



Copyright 2007 by Timber Frame Homes Inc.
All federal, state, and local codes, ordinance, regulations etc. shall be considered as part of specifications for this building and shall take precedence over anything shown, described or implied where same are of variance. All dimensions and conditions shall be verified on site by builder.

NO.	DATE	REVISIONS	BY
1	3-19-08	Final	MAW
2	3-25-08	Wdo Schedule	MAW
3	4-1-08	Add Wdo CC Change Door F	MAW

Maggie Valley
Floor Plans
Noted
1-30-08
FILE NO. 0801
DRAWN BY MAW/GB
SHEET NUMBER 2A



Lower Level Floor Plan
 1416 sqft Living Area 1/4" = 1'-0"



Copyright 2007 by Timber Frame Homes Inc.
 All federal, state, and local codes, ordinance, regulations etc. shall be considered as part of specifications for this building and shall take precedence over anything shown, described or implied where same are of variance. All dimensions and conditions shall be verified on site by builder.

REVISIONS		BY
NO.	DATE	REMARKS
1	3-19-08	Final