



Rear Elevation



Front Elevation

Fitzgerald

Elevations

NOTED  
SCALE: 6-18-12

FILE NO. 061212  
DRAWN BY BLJ

SHEET NUMBER 1

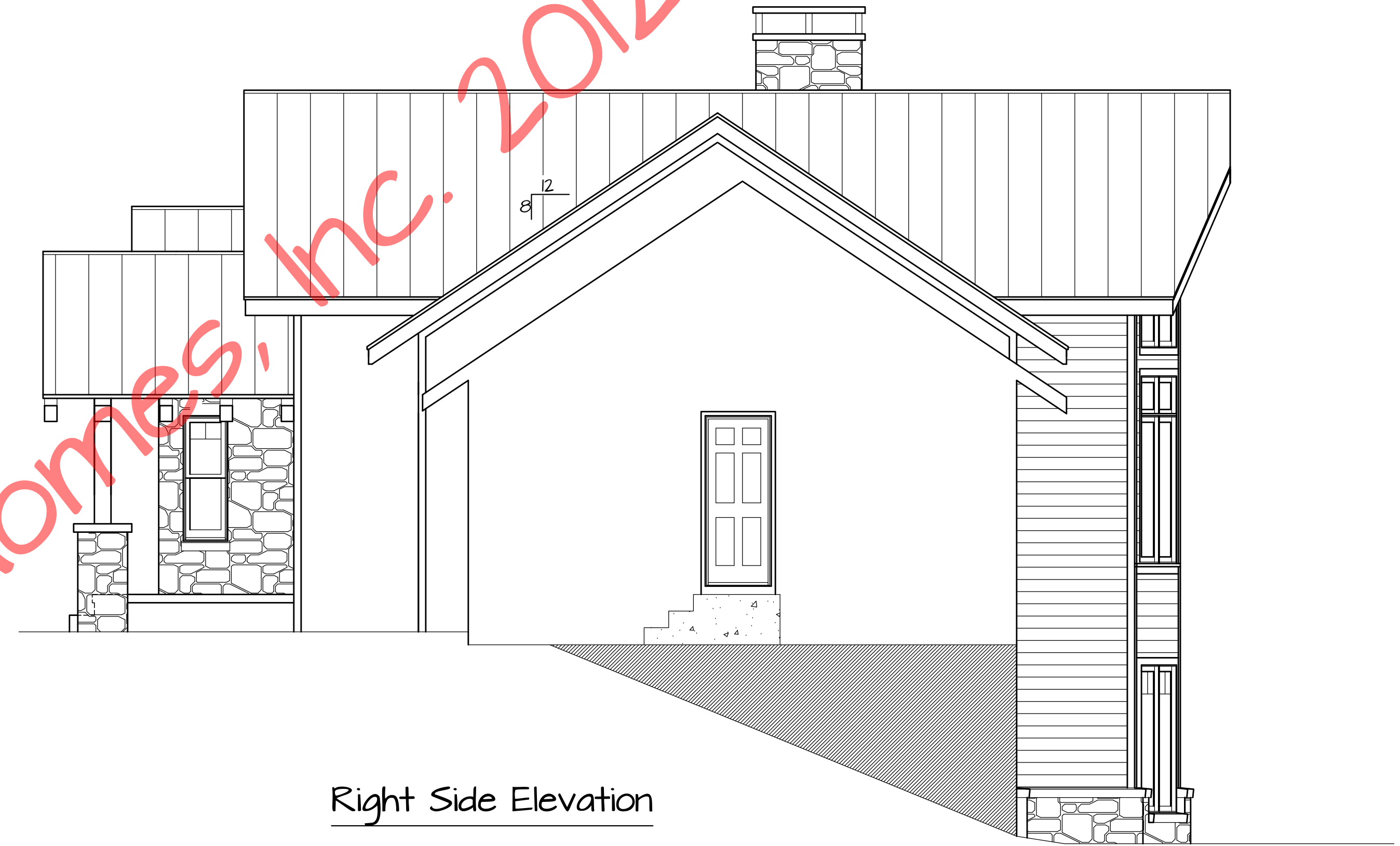
Copyright 2012 by Timber Frame Homes, Inc.  
All federal, state, and local codes, ordinance, regulations etc. shall be considered as part of specifications for this building and shall take precedence over anything shown, described or implied where same are of variance. All dimensions and conditions shall be verified on site by builder.

NO.	REVISIONS	REMARKS	BY
6-18-12			

Fitzgerald



Left Side Elevation



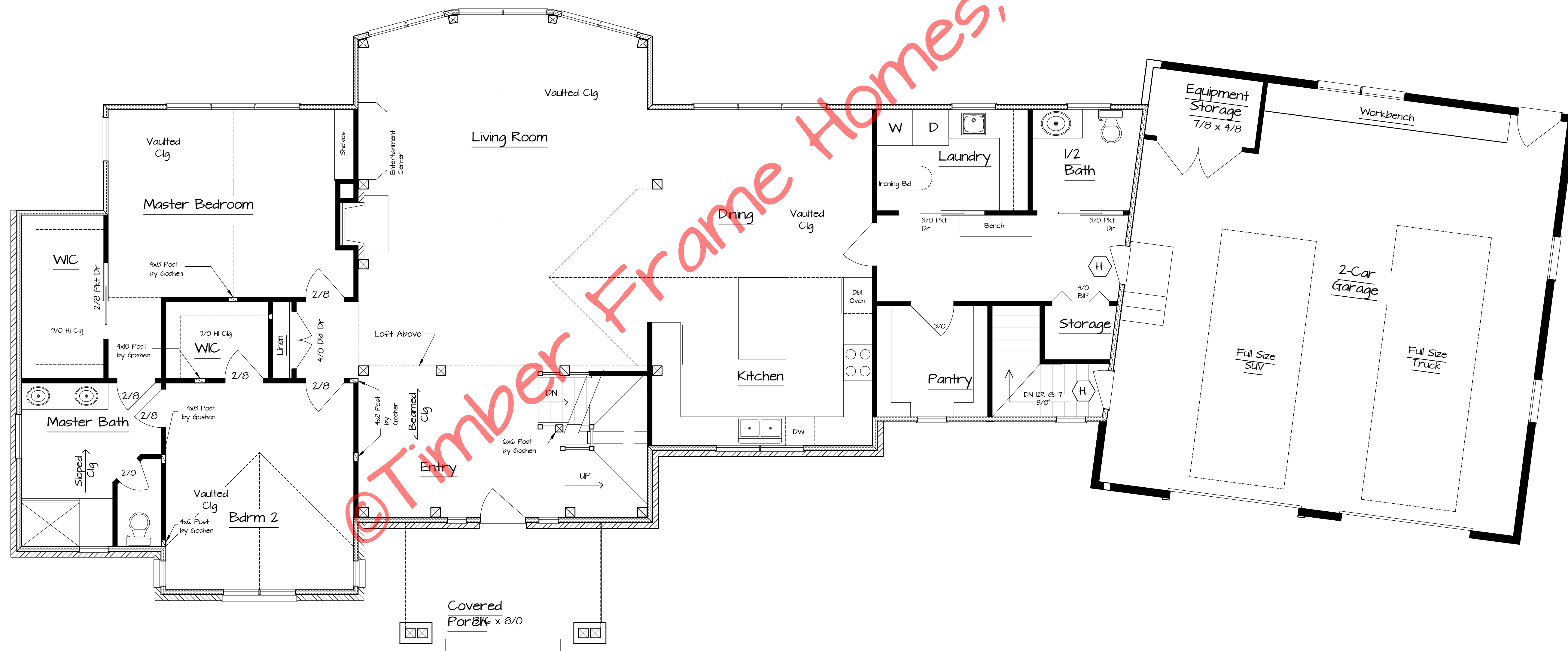
Right Side Elevation

©Timber Frame Homes, Inc. 2012

Copyright 2012 by Timber Frame Homes, Inc.  
 All federal, state, and local codes, ordinance, regulations etc. shall be considered as part of specifications for this building and shall take precedence over anything shown, described or implied where same are of variance. All dimensions and conditions shall be verified on site by builder.

REVISIONS	
NO.	REMARKS
6-18-12	

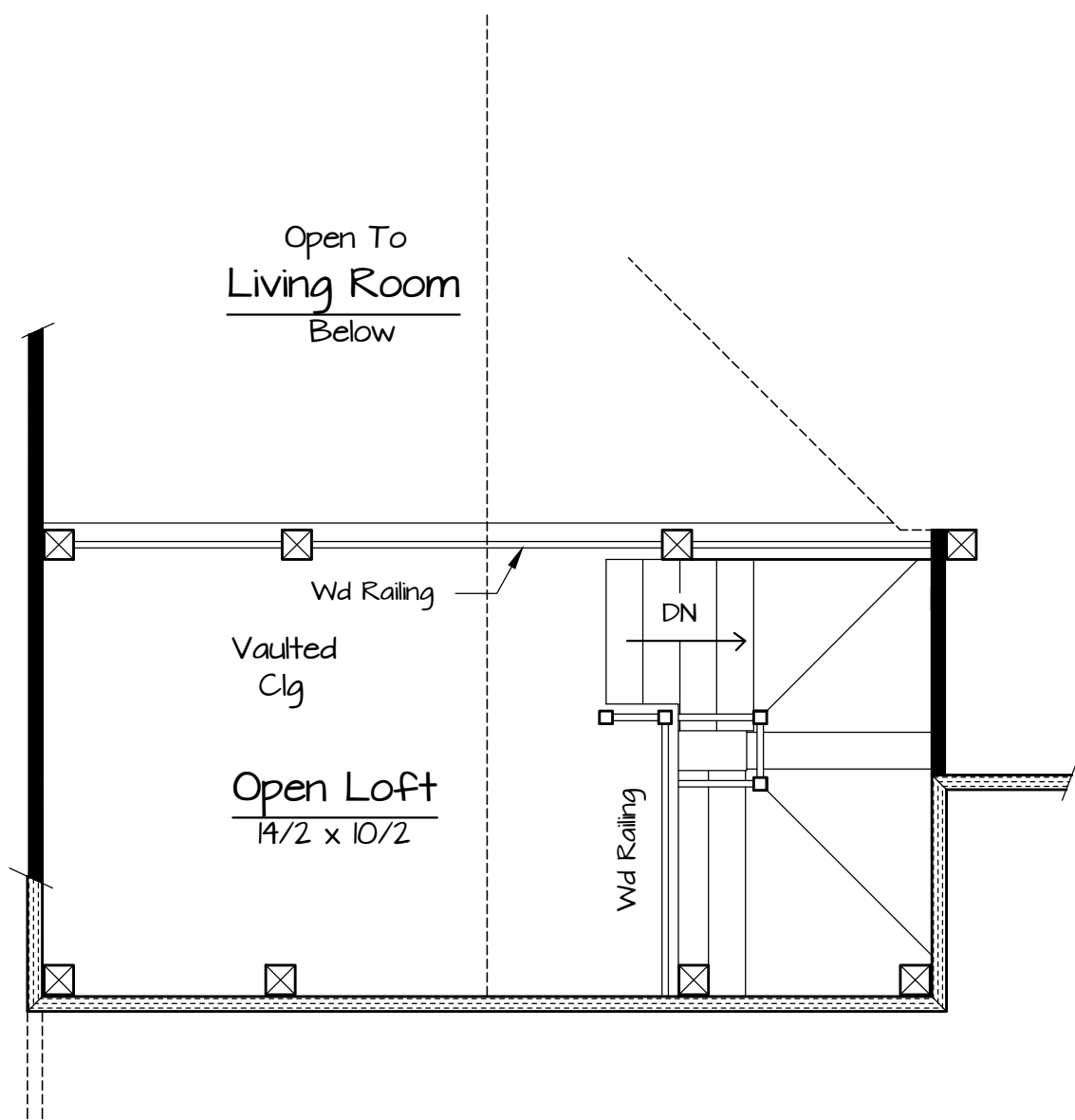
Fitzgerald  
 Elevations  
 NOTED  
 6-18-12  
 FILE NO. 061212  
 DRAWN BY BLJ  
 SHEET NUMBER IA



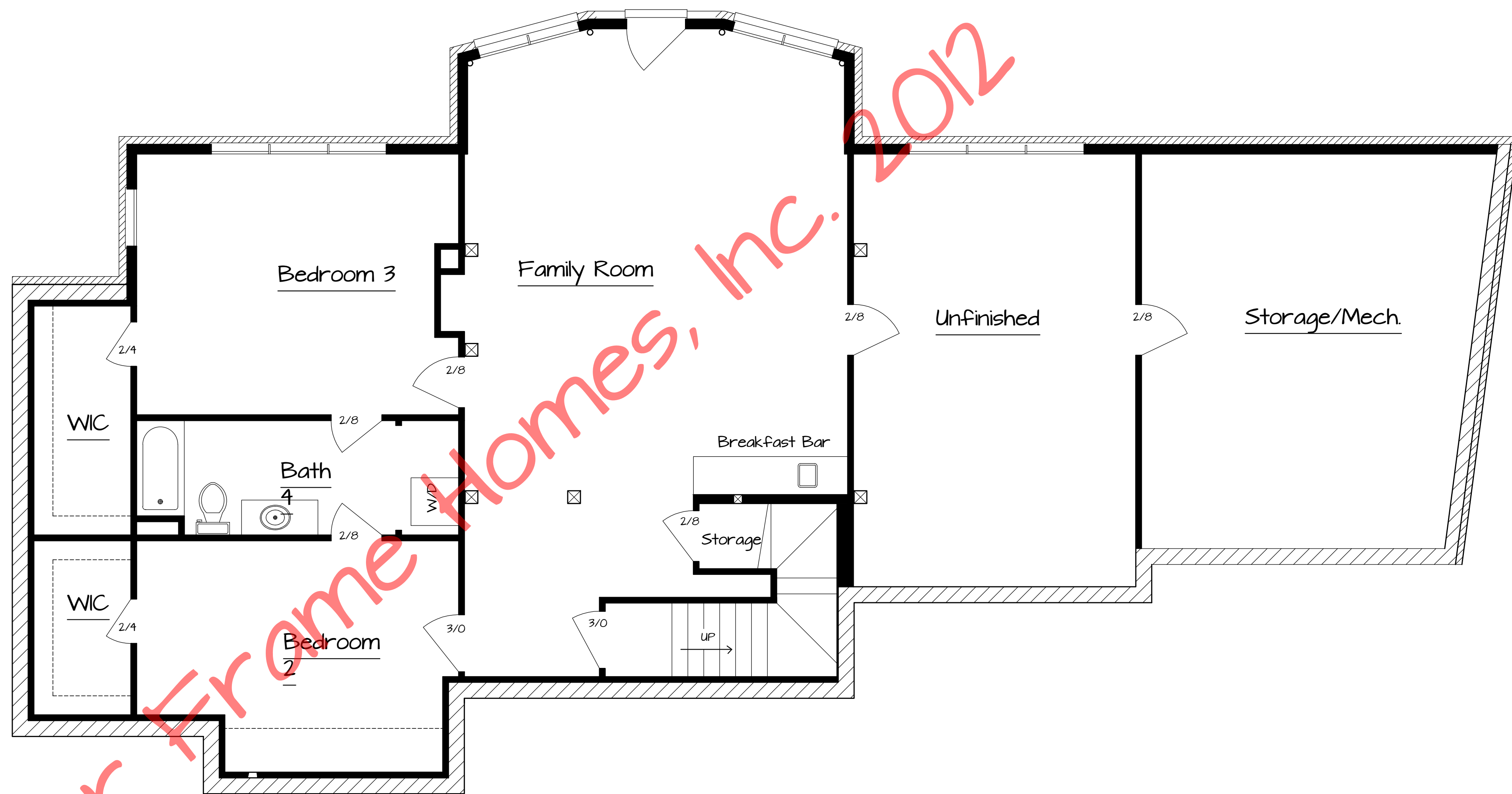
© Timber Frame Homes, Inc. 2012

First Floor Plan  
2,125 sq ft Living Area

Fitzgerald First Floor Plan	
NOTED 6-18-12	FILE NO. 061212 DRAWN BY BLJ SHEET NUMBER 2
Copyright 2012 by Timber Frame Homes, Inc. All federal, state, and local codes, ordinance, regulations etc. shall be considered as part of specifications for this building and shall take precedence over anything shown, described or implied where same are of variance. All dimensions and conditions shall be verified on site by builder.	
REVISIONS NO. 6-18-12	BY REMARKS



Second Floor Plan  
851 sqf Living Area



Lower Level Floor Plan  
1,416 sqf Living Area

©Timber Frame Homes, Inc. 2012

Fitzgerald

Second Floor Plan

FILE NO.	OG1212	SHEET NUMBER	2A
NOTED	NOTED	DATE	6-18-12
DRAWN BY	BLJ		

Copyright 2012 by Timber Frame Homes, Inc.  
All federal, state, and local codes, ordinance, regulations etc. shall be considered as part of specifications for this building and shall take precedence over anything shown, described or implied where same are of variance. All dimensions and conditions shall be verified on site by builder.

NO.	REVISIONS	REMARKS	BY

Fitzgerald

2A